

IP20-I DIN

SERIES

CONNECTION: **FRONT**
TERMINAL TYPE: **SCREW**
MOUNTING: **PANEL / DIN RAIL**

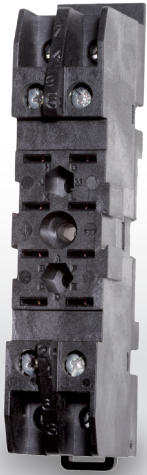
SUITABLE
FOR



OVERVIEW

- Cable secured with screws
- Mounting to panel and 35 mm DIN rail
- Sturdy construction
- Excellent contact pressure on relay terminals
- No internal soldering
- Inputs for maximum section 2.5 mm²
- Provision for fitment of keying pins
- Provision for fitment of retaining clip
- Protection IP20

MODELS



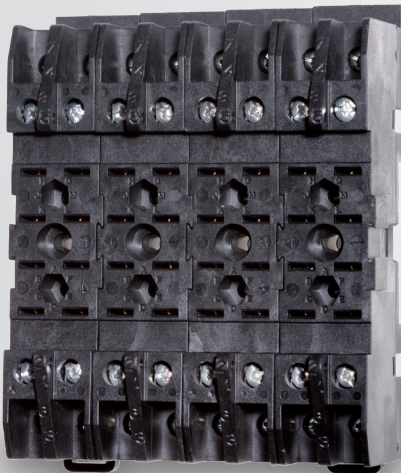
50IP20-I DIN



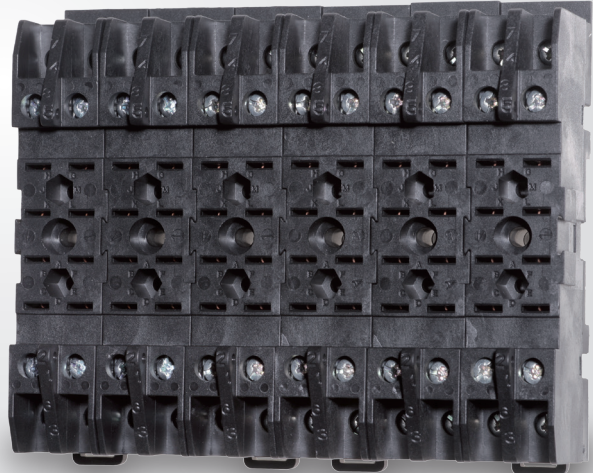
48BIP20-I DIN



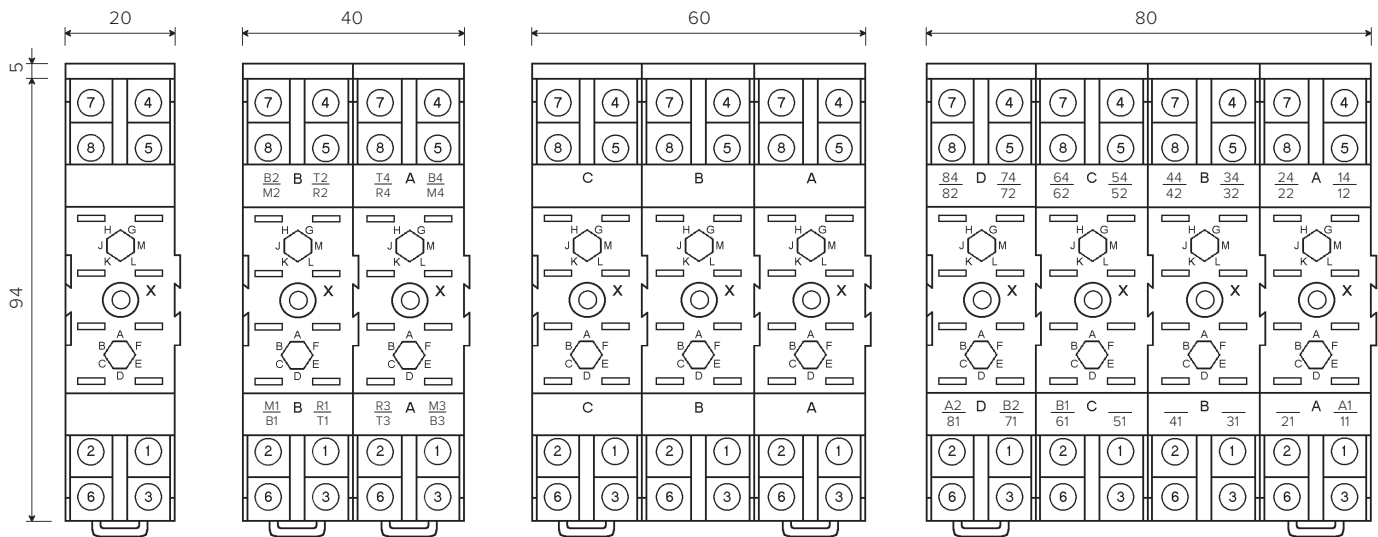
78BIP20-I DIN



96IP20-I DIN



156IP20-I DIN

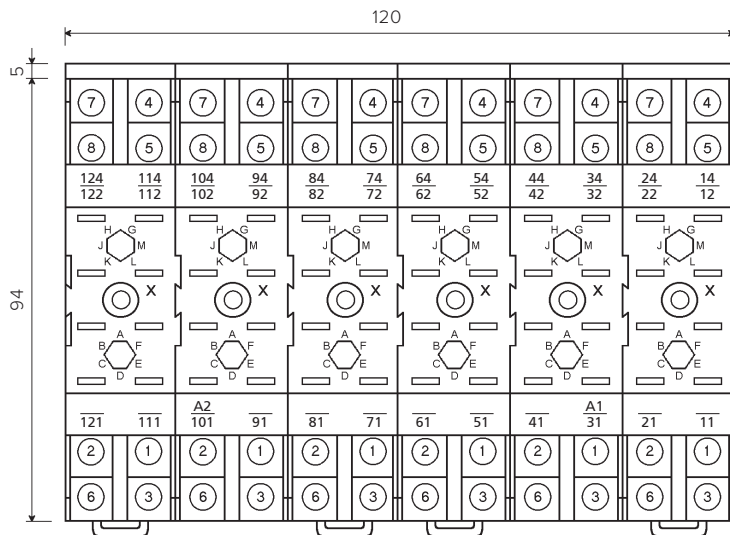


50P20-I DIN

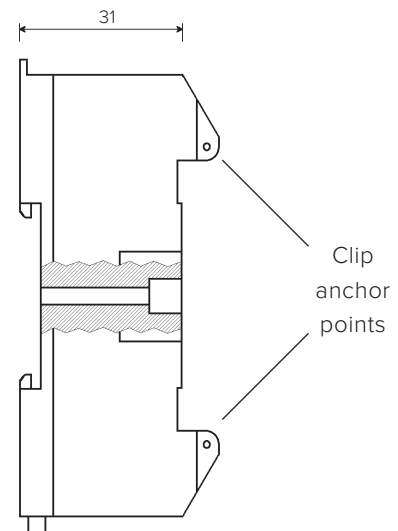
48BIP20-I DIN

78BIP20-I DIN

96P20-I DIN



156P20-I DIN



Side view

X = Fixing holes

SPECIFICATIONS

Weight: 70 / 140 / 210 / 280 / 415 g

Operating temperature: -50°C...+70°C

Storage temperature: -50°C...+85°C

Panel mounting:

- \varnothing holes: 4.2mm
- centre distance between adjacent holes: 20mm

Degree of protection: IP20

Dielectric strength: 2.5kV 50Hz 1 min.

Mounting to Omega support: H35 to DIN46277/3 - EN60715 standards

Type and size of screw: M3 thread, cross head

Tightening torque: 0.5...0.6 Nm

Width of slot: 6.9 mm

Maximum section of cable: 2 x 2.5 mm²

Fire resistance: EN60695-2-1, UL94 - VO, EN45545-2

Standards: EN60255, EN60947, EN 61810, EN61373